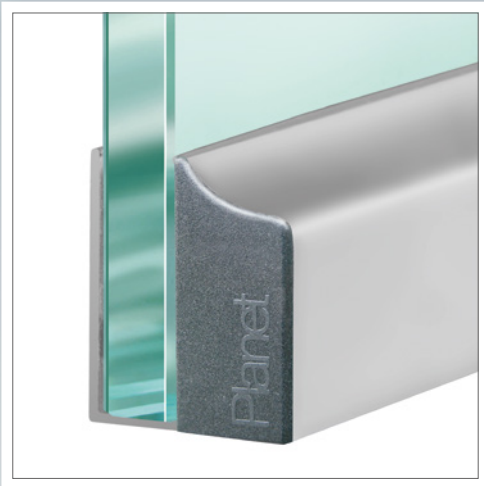
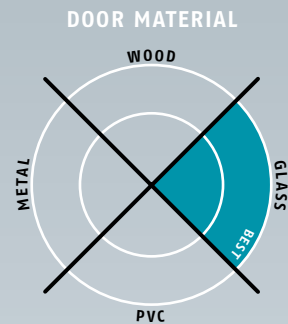


Planet KG-A8 | A10 → 16,5 x 35 mm | ↓ 18 mm | ≪ 48 dB



Main features

- Seal height up to ↓ 18 mm
- Acoustic insulation up to ≪ 48 dB in case of an optimal sealing
- For one and double leaf folding all-glass doors, with a glass thickness of 8 to 10 mm
- Planet KG-A8 | A10 to be attached and glued
- Planet drop-down seal cemented in A8 / A10 protection profile
- Unilateral and soundless release, silent seal
- Due to parallel drop-down no trailing on the floor
- Automatic compensation at inclined floors
- High-grade silicone lip, simple lift height adjustment
- Can be shortened up to the next shorter length on stock
- 7 years warranty

Versions / options

- Planet KG-A8 | A10 → RD ≪ 48 dB, smoke-shielding
- Planet KG-A8 | A10 → FH+RD ≪ 48 dB, fire-retardant + smoke-shielding
- Option bevel lip ≪ 44 dB, up to ↓ 22 mm, for uneven floors
- Special versions on request

Surfaces

- Protection profile silver anodised EV1
- Protection profile stainless steel satin anodised

Door types with Planet KG-A8 | A10

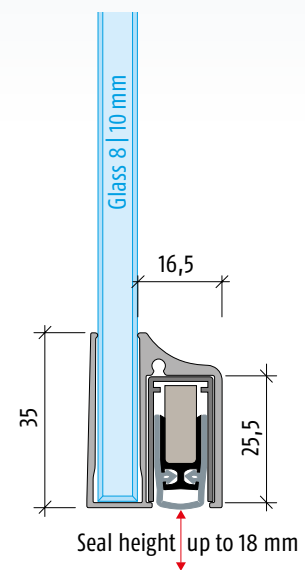


More functions



Technical specifications

| | |
|------------------------|--|
| Profile material | aluminum, → 16,5 x 35 mm, silver anodised EV1 or stainless steel satin anodised |
| Seal profile | high-grade silicone or high-grade self-extinguishing silicone |
| Seal height | up to ↓ 18 mm |
| Sound absorption value | up to ≪ 48 dB at 7 mm space to the floor; up to ≪ 46 dB at 14 mm space to the floor |
| Lift height adjustment | on the release knob with an Allen key 3 mm |
| Lengths in stock | 459, 584, 709, 834, 959, 1084, 1209, 1334, 1459 mm |
| Special lengths | on request up to 6000 mm, sliding doors up to 1600 mm |
| Release | unilaterally on hinge side |
| Can be shortened | up to the maximum of 125 mm |
| Fastening | to be glued |
| Frame protector plate | stainless, hammer fixed, 20 x 20 mm |
| Test approvals | on request |

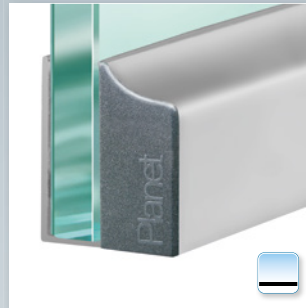




Planet KG-A8 | A10, attached and glued



Planet KG-A8 | A10, attached and glued release side



Planet KG-A8 | A10, with cover plate



Option: Planet KG-A8 | A10, bevel lip for **uneven floors**



Accessories: Planet frame protector plate, type 1 (stainless), 20 x 20 mm



Set of Planet cover plates Planet KG

Order specifications

| | |
|---|------------------------------|
| Planet KG-A8 A10 → RD ≤ 48 dB → silver anodised EV1 incl. set of cover plates and frame protector plate, type 1 | Prod. code 38xxx-A8 A10* |
| Planet KG-A8 A10 → FH+RD ≤ 48 dB → silver anodised EV1 incl. set of cover plates and frame protector plate, type 1 | Prod. code 39xxx-A8 A10* |
| Planet KG-A8 A10 → RD ≤ 48 dB → stainless steel satin anodised incl. set of cover plates and frame protector plate, type 1 | Prod. code 38xxx-A8X A10X* |
| Planet KG-A8 A10 → FH+RD ≤ 48 dB → stainless steel satin anodised incl. set of cover plates and frame protector plate, type 1 | Prod. code 39xxx-A8X A10X* |

* xxx = refer to price list for profile length

Accessories | Options

| | |
|--|--|
| Planet frame protector plate type 1 (stainless); possible type 2/3/4/5 → refer to chapter Accessories Options | Prod. code 900014 |
| Cut the Planet to fix dimension | Prod. code 900225 |
| Set of Planet cover plates Planet KG | Prod. code 900252 |
| Sliding door | Prod. code 900908 |
| Bevel lip (≤ 44 dB, up to ↓ 22 mm) DIN L or DIN R | refer to price list, options / supplements |

Advertising text



Planet KG-A8 | A10 → RD (smoke-shielding) ≤ 48 dB
Automatic door drop-down seal Planet KG-A8 | A10 → RD ≤ 48 dB, unilateral release with parallel drop-down and automatic compensation at inclined floor, protection profile silver anodised EV1 or stainless steel satin anodised, to be attached and glued, seal height up to ↓ 18 mm. Lip from silicone. Protection profile and profile made from aluminum → 16,5 x 35 mm, incl. cover plate on lock side for folding doors.

Advertising text



Planet KG-A8 | A10 → FH+RD (fire-retardant + smoke-shielding) ≤ 48 dB
Automatic door drop-down seal Planet KG-A8 | A10 → RD+FH ≤ 48 dB, appropriate for fire-retardant and smoke-shielding doors, sound absorption value SK 1-3, unilateral release with parallel drop-down and automatic compensation at inclined floor, protection profile silver anodised EV1 or stainless steel satin anodised, to be attached and glued, seal height up to ↓ 18 mm. Lip from silicone. Protection profile and profile made from aluminum → 16,5 x 35 mm, incl. cover plate on lock side for folding doors.